

DAMS

value for ΔH given by Likhter, in the original paper as 0.023 eV, is equivalent to 530 cal/g atom.

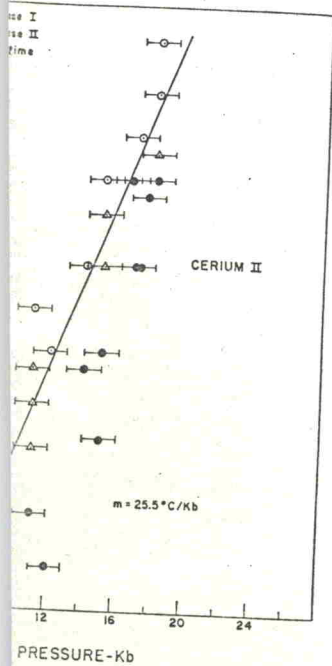


Diagram of cerium showing stability of Cerium II as determined by X-ray data. Each point indicates pressure and temperature with a certain uncertainty.

The Cerium II transformation is sluggish. X-ray examination of both phases at various pressures and temperatures from the phase boundary. Measurements were made at constant pressure and constant temperature.

ΔH^* (cal/g. atom)
± 100
50

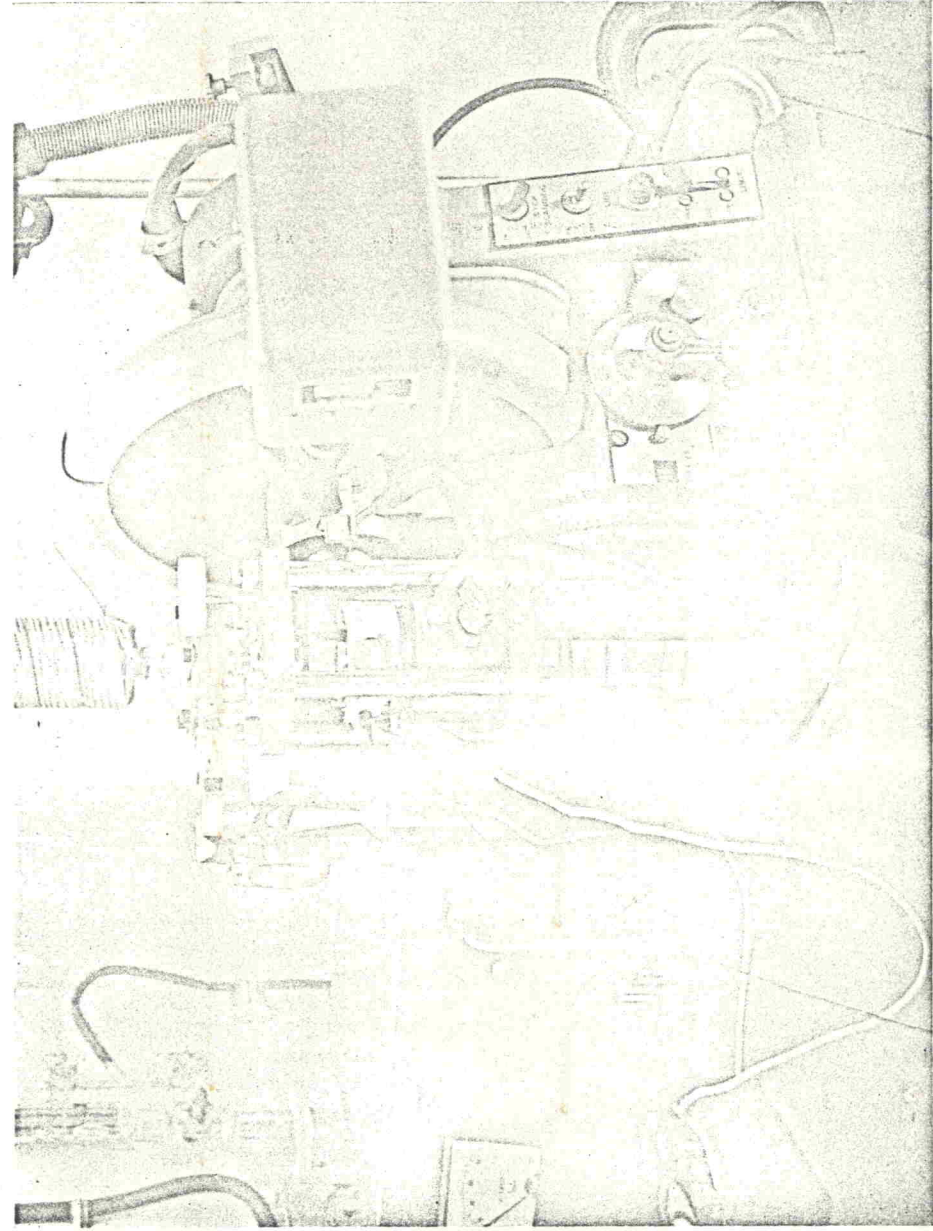


FIG. 2. Close-up view of vessel mounted in press inserted into the goniometer of the diffraction unit. The large hose is the pressure line and the small hoses are water lines leading to the cooling jackets on the ram and spindle. Wires are power leads and thermocouple. X-ray shields have been removed.